

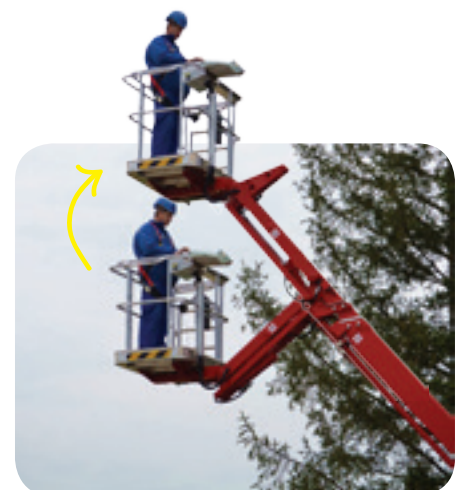
EuropeLIFT

optimized reaching

TM16TJ

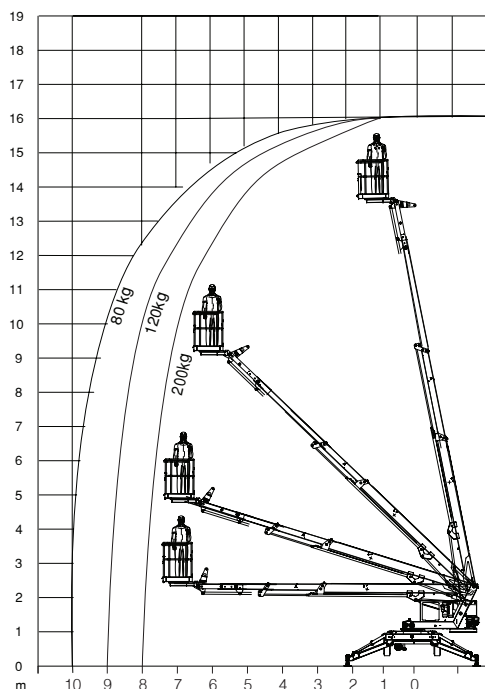


- Working height: 16 m
- Horizontal Outreach 10 m (80kg)
- Straight telescopic boom with flyjib, and platform rotator



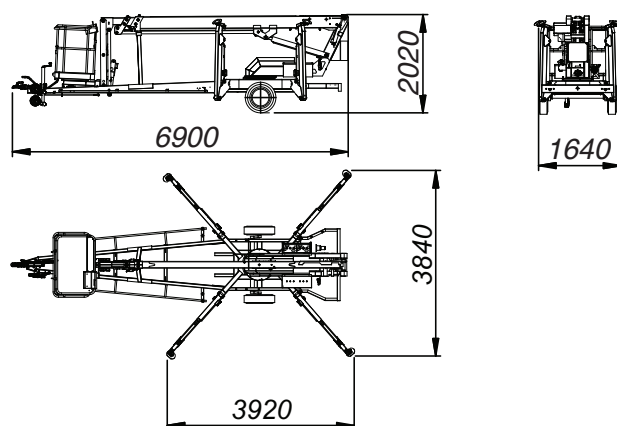
TRAILER MOUNTED BOOM LIFT

Specifications	TM 16 TJ
Working Height	16 m
Platform Height	14 m
Horizontal Reach (200 kg)	8 m
Horizontal Reach (80kg)	10 m
Platform Capacity	200 kg
Slewing	355°
Flyjib	1.3 m
Platform dimensions	1.2 x 0.8 x 1.1 m
Platform rotator	2x45°
Transport length (A)	6.90 m
Transport width (B)	1.64 m
Transport height (C)	2.02 m
Total weight (230V, Honda, wheel assist)	ca. 1820 kg
Total weight (battery 24VDC, wheel assist)	ca. 1920 kg
Outrigger footprint (D) Outrigger plate outer edge	3.84 m
Gradeability	10%
Max. towing speed	80 km/h
Brake	Overrun Brakes with Gas Spring
Tyres	215 R 14 C



EuropeLIFT

TYP: **TM 16TJ**



STANDARD FEATURES

- 230V & Honda power source
- Straight telescopic superstructure with flyjib 1,3 m
- Hydraulic platform leveling with auto correction at 3°
- Chassis level sensor 1° with acoustic alarm
- Alu basket with wide tool tray, safety handrail and dual harness points
- Proportional electro-hydraulic controls by fingertip joysticks
- Ground pressure sensors on all outrigger plates with audible and visible alarms
- 230 V outlet in the basket
- Wheel assist
- Hourmeter
- Ground and upper controls with tarp cover
- EC type road approval
- Manual recovery with hand pump
- Automatic reverse and overrun brakes
- Colour of the machine: RAL3002 (red)

OPTIONS

- Custom colour
- Auto chassis level
- Battery power 24 V 225 Ah
- G.R.P. basket with tool tray (2 man)
- Outrigger plate pads

Manufacturer: EuropeLIFT Kft.
Adresse: H-8992 Bagod, Gépállomás Street. 9.
Tel: +36 20 9474 767
Internet: www.europelift.com
E-mail: europelift@t-online.hu

Distributed by: