

EuropeLIFT

optimize reaching

TR15GT

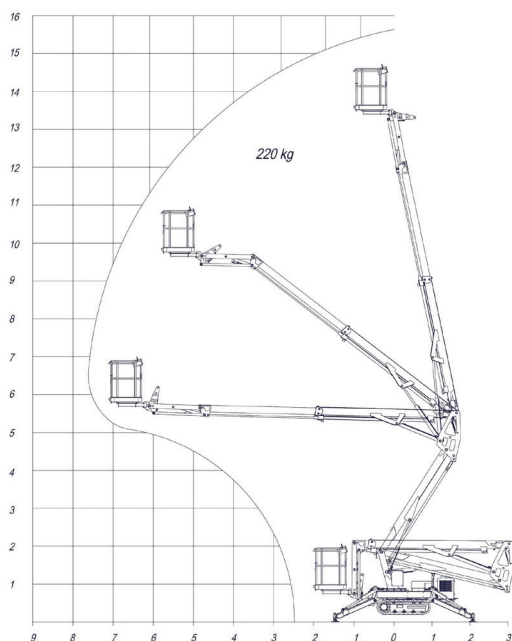


- Working height: 15,2 m
- Horiz. Outreach: 7,5 m (220 kg)
- Hydraulic platform rotator
- Auto chassis leveling
- Ground pressure sensors on all outrigger plates with audible and visible alarms
- Adjustable width and height tracks
- Alu basket with wide tool tray safety handrail
- Cable Remote control for drive and outriggers
- Auto-home function (standard)
- Built in Wifi connection for worldwide service support
- Short training time



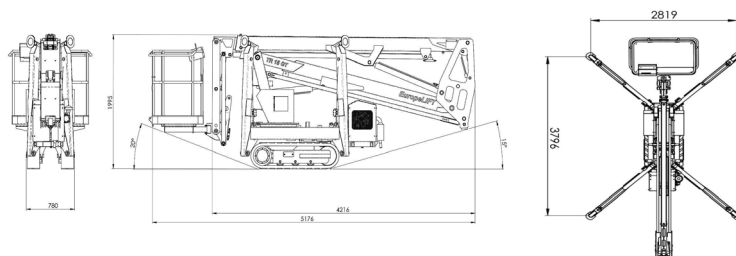
TRACK MOUNTED BOOM LIFT

Technical data	TR 15 GT
Working Height	15,2 m
Platform Height	13,3 m
Horizontal Reach (220kg)	7,5 m
Max. Platform capacity	220 kg
Slewing	355°
Flyjib	1.3 m
Platform dimensions	1,2x0,8x1,1 m
Platform rotator	2x70°
Transport lenght (A)	5,15 m
Transport lenght	4,50 m
Transport width	0,78 m
Transport height	1,99 m
Total weight	2150 kg
Outrigger footprint (D) Outrigger plate outer edge	ca. 3,0 m
Gradeability	12° (21,3%)
Drive speed	1,6 km/h
Energychain	Innenlegend



EuropeLIFT

TYP: TR15GT



STANDARD FEATURES

- 15,2 m working height
- 7,5 m horizontal reach
- Auto chassis leveling
- Non marking tracks
- Width and length adjustable tracks (manual)
- Alu basket with wide tool tray, safety handrail
- Propotional electro-hydraulic control by fingertip joysticks
- Cable remote track and outrigger remote control
- Ground pressure sensors on all outrigger plates with accousting signal
- Ground and work platform control
- Chassis level sensor 1° with accoustic alarm
- 230V connection in the work basket
- Lower and upper control panel tarpaulin covers
- Working hour meter
- Manual pump emergency control
- Hydraulic platform rotator
- Hydraulic platform leveling with auto correction at 3°
- High-gloss paint, color: red RAL 3002
- 230V & Honda iGX power source with electric speed control
- Slewing ring (620mm)

OPTIONS

- Custom colour
- Outrigger plates 400x400x30 mm
- Air and water line in the work basket
- LED flashing lights on outriggers

EuropeLIFT

Adresse: H-8992 Bagod, Gépállomás u. 9.

Tel: +36 20 9474 767

Internet: info@europelift.com | www.europelift.com