

EuropeLIFT

optimize reaching

TM 16GT

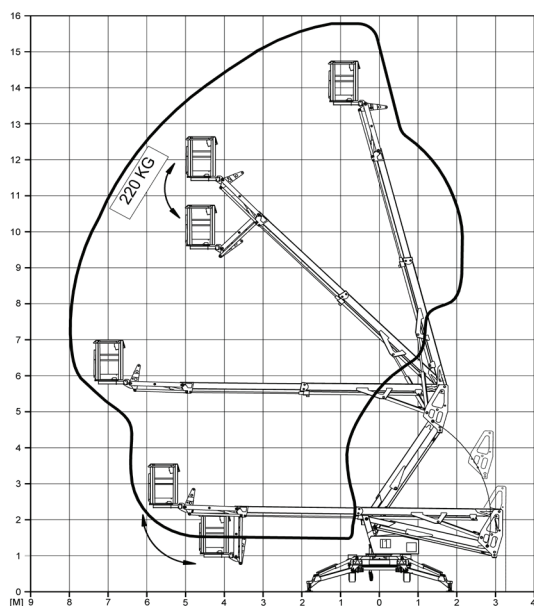


- Working Height: 15,75 m
- Platform Height: 13,75 m
- Horizontal Reach: 8,1 m (220 kg)
- Outrigger footprint: 3,83 m
- Articulated telescopic boom
- Flyjib: 1,3 m
- Standard Platform Rotator
- Auto chassis level (option)



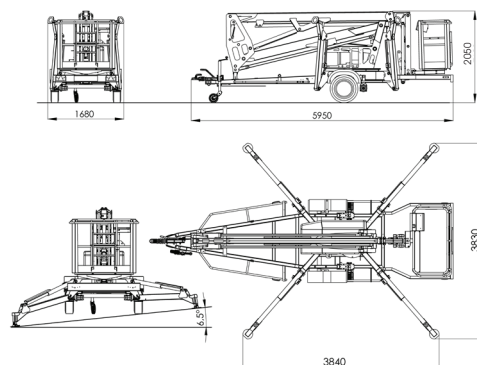
TRAILER MOUNTED BOOM LIFT

Specifications Daten	TM 16 GT
Working Height	15,75 m
Platform Height	13,75 m
Horizontal Reach (220kg)	8,1 m
Max. Platform capacity	220 kg
Slewing	355°
Flyjib	1.3 m
Platform dimensions	1,4x0,7x1,1 m
Platform rotator	2x45°
Transport Lenght	ca. 5,95 m
Transport width	1,68 m
Transport Height	2,05 m
Total weight (230V, Honda, wheel assist, Flyjib)	1850 kg
Total weight 24VDC (battery, wheel assist)	1900 kg
Outrigger footprint	3,83 m
Gradeability	6,5°
Max. towing speed	80 km/h
Brake	Auflaufbremse mit Rückfahrautomatik
Wheel	215R 14C
Energychain	Inside



EuropeLIFT

TYP: **TM 16GT**



STANDARD FEATURES

- 230V & Honda power source
- Articulated superstructure with multi telescopic upper boom
- Flyjib 1,3 m
- Hydraulic platform leveling with auto correction at 3°
- Chassis level sensor 1° with accoustic alarm
- Alu basket with wide tool tray, safety handrail and dual harness points
- Proportional electro-hydraulic controls by fingertip joysticks
- Ground pressure sensors on all outrigger plates with audible and visible alarms
- 230V outlet in the basket
- Wheel assist
- Hourmeter
- Ground and upper controls with tarp cover
- EC type road approval
- Manual recovery with hand pump
- Automatic reverse and overrun brakes
- Colour of the machine: RAL3002 (red)

OPTONS

- Custom colour
- Auto chassis level
- Battery power 24V 225 Ah
- G.R.P. basket with tool tray (2 person)
- Outrigger plate pads

EuropeLIFT

Adresse: H-8992 Bagod, Gépállomás u. 9.

Tel: +36 20 9474 767

Internet: info@europelift.com | www.europelift.com

Distributed by: