

EuropeLIFT

optimize reaching

TM15TJ

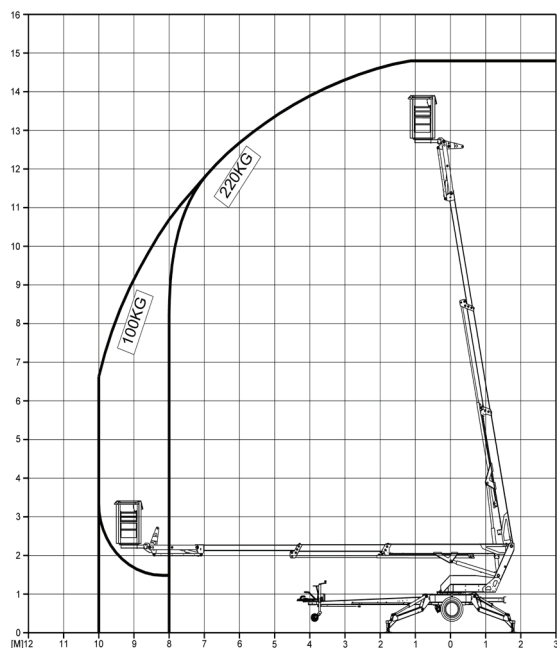


- Working height: 14,8 m
- Horizontal Outreach: 10 m (100 kg)
- Max. Platform capacity 220 kg (2 persons)
- Gradeability: 6,8° (12%)
- Min. weight: 1800 kg
- Compact structure
- Flyjib
- Outrigger with angle



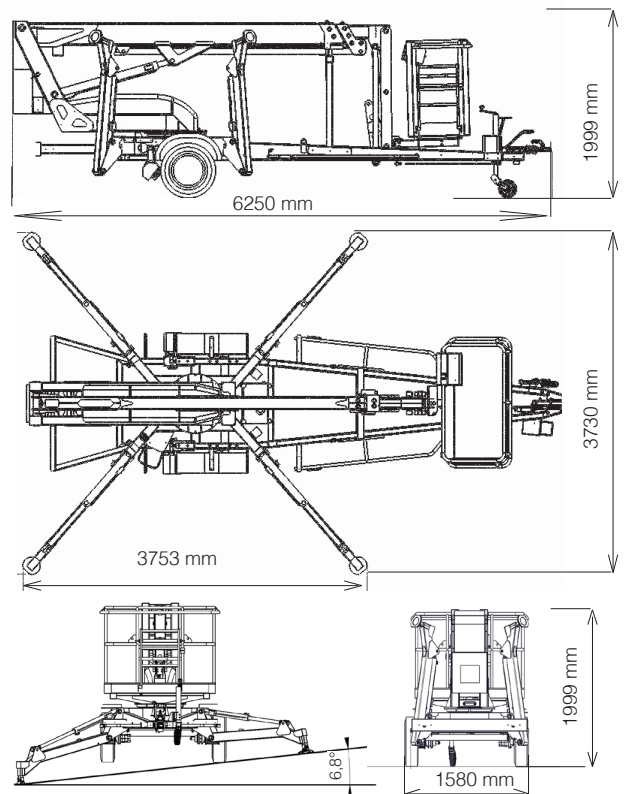
TRAILER MOUNTED BOOM LIFT

Specifications	TM15TJ
Working Height	14,8 m
Platform Height	12,8 m
Horizontal Reach (220 Kg)	8 m
Horizontal Reach (100 Kg)	10 m
Max. Platform capacity	220 kg
Slewing	365°
Platform dimensions	1,4x0,7x1,1 m
Platform rotator	2x45°
Transport length	6,25 m
Transport width	1,6 m
Transport height	1,99 m
Total Weight 230 V & Honda, wheel assist, rotator	ca. 1800 kg
Total Weight 24 VDC wheel assist, rotator	ca. 1860 kg
Outrigger footprint Outrigger plate outer edge	ca. 3,72 m
Gradeability	6,8° (12%)
Max. towing speed	80 km/h
Brake	Overrun Brakes with Gas Spring
Wheels	215 R 14 C



EuropeLIFT

TYP: TM15TJ



STANDARD FEATURES

- 230V power source
- Telescopic upper boom with moment control system
- Flyjib 1,3m
- Wheel assist, with hydraulic coupling
- Platform rotator 2x45°
- Hydraulic platform leveling with auto correction at 3°
- Proportional electro-hydraulic controls by fingertip joysticks
- Ground and platform controls
- Chassis level sensor 1,5° with acoustic alarm
- Ground pressure sensors at outrigger plates with alarm
- 230V outlet in the basket
- Ground and upper controls with tarp cover
- Hourmeter
- Manual recovery with hand pump
- Side and rear LED lights
- All around underrun frames
- Alu basket with wide tool tray, safety handrail and dual harness points
- Automatic reverse and overrun brakes
- Colour of the machine: RAL3002 (red)
- EC type road approval

OPTIONS

- Dual power source 230V & Honda
- Battery power source 24V DC
- Auto chassis level
- Custom colour
- Outrigger plates 400x400x30mm
- Air/Water Line to platform
- Fiberglass basket (G.R.P.)

EuropeLIFT

Adresse: H-8992 Bagod, Gepallomas u. 9.

Tel: +36 20 9474 767

Internet: info@europelift.com | www.europelift.com